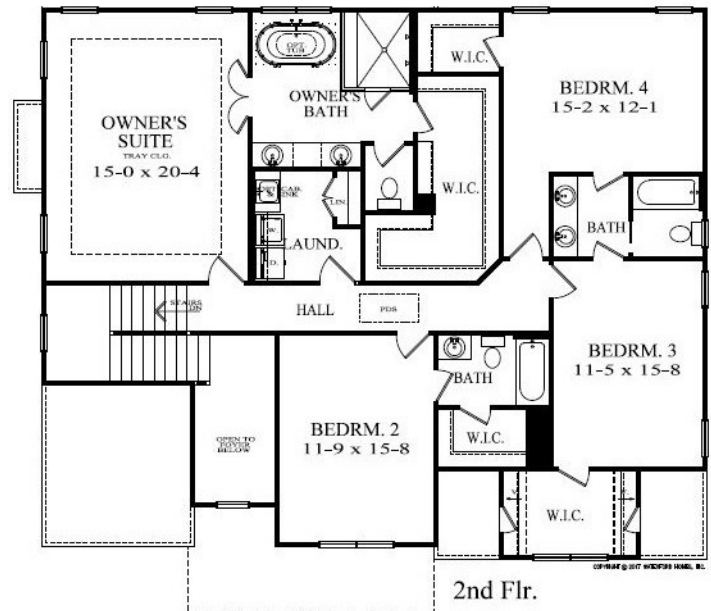
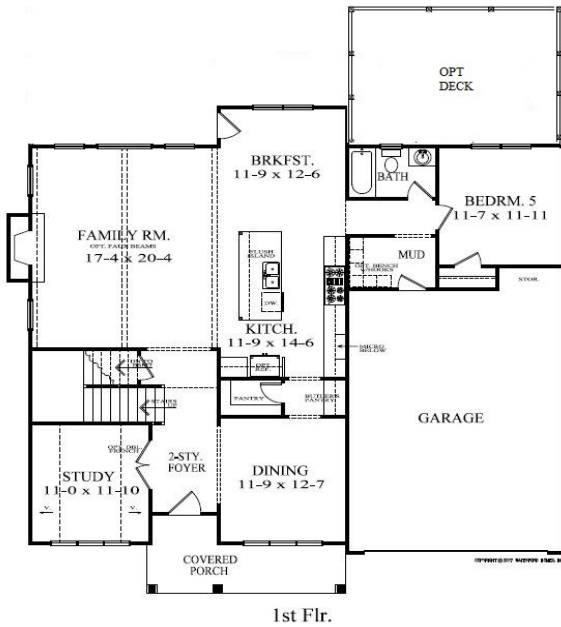


# ELLIS

## Inventory Home

Lot 9 - Ashford II



SALES OFFICE — 678-631-8801

[www.ellismarietta.com](http://www.ellismarietta.com)

**PARAMOUNT**  
BROKERS INC



**WATERFORD HOMES**  
"Your Confidence Builder"



Information is believed to be accurate, but is not warranted and is subject to changes, omissions, errors, prior sales and withdrawal without notice.



# Inventory Home

## Lot 9 - Ashford II

PLAN

ASHFORD

LOT

9

FOUNDATION

BASEMENT

INCLUDED FEATURES

PRICE

BASE PRICE

\$520,900

COVERED FRONT PORCH ELEVATION "E"

INCL

BRICK FRONT W/ BRICK WATERTABLE ON SIDES

INCL

3-CAR FRONT CARRIAGE GARAGE

\$17,000

10' FIRST FLOOR AND 9' SECOND FLOOR CEILINGS

INCL

5' FRENCH DOOR INTO STUDY

\$1,500

HARDWOODS THROUGHOUT FIRST FLOOR

INCL

DECORATING UPGRADES (TILE & COUNTERTOPS)

\$5,000

**FULL PRICE:**

**\$544,400**

**MARKET HOME INCENTIVE:**

**\$0**

**CONTRACT PRICE:**

**\$544,400**

APPROX

SQ. FT.

HEATED

3,300

OPEN

120

TOTAL

3,420

BASEMENT

1,550

GARAGE

795

COVERED PORCH

120

**TOTAL UNDER ROOF**

**4,335**

SALES OFFICE — 678-631-8801

[www.ellismarietta.com](http://www.ellismarietta.com)



Information is believed to be accurate, but is not warranted and is subject to changes, omissions, errors, prior sales and withdrawal without notice.